

THE OXFORD SCIENCE PARK

THE MEDAWAR CENTRE - SERVICED UNITS FOR LABORATORY USE



- Serviced units for laboratory use
 - Suitable for up to 7 companies
- Ranging in size from 2 person – 6 person units
 - Shared laboratory facilities and equipment
 - One month licence agreements

THE MEDAWAR CENTRE - SERVICED UNITS FOR LABORATORY USE

Medawar Centre - Serviced Units for Laboratory use

The ground floor Medawar Centre (west building) provides a range of units suitable for laboratory use.

Each laboratory unit has vinyl flooring, electric and data trunking and capped services (for occupier fit-out).

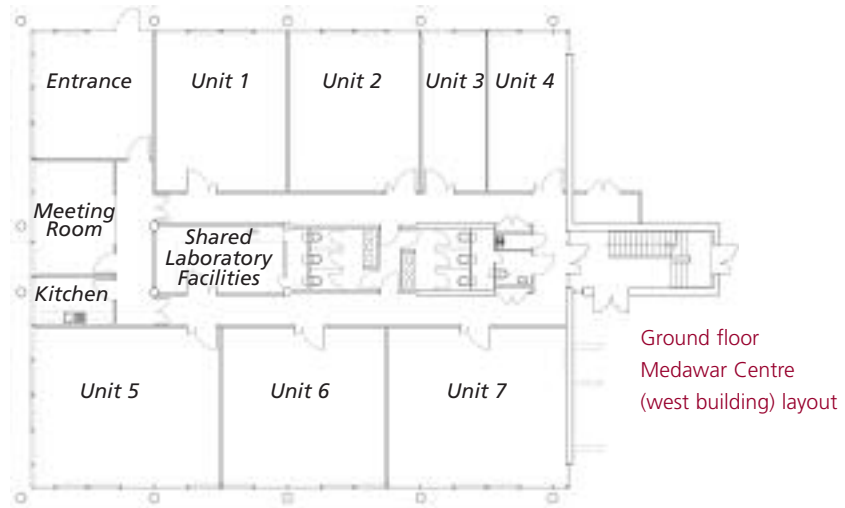
The units are suitable for small laboratory based companies or R&D and satellite departments of larger organisations.

Monthly licence fee includes:

- Business rates
- Water rates
- Park service charge
- Electricity costs
- Broadband Internet Connection
- Category 5 cabling
- Telephone line rental
- Voice mail
- Parking and visitor parking
- Park security
- Web Site listing
- Shared kitchen facilities

Shared laboratory facilities:

- Autoclave
- Glass wash
- Drier
- Ice maker
- De-ionised water supply



The Magdalen Centre South entrance



The Magdalen Centre Restaurant

The Magdalen Centre South (MCS)

The nearby Magdalen Centre is the original Science Park 'Innovation Centre' and provides office units from 150 ft² to 2000 ft².

Laboratory occupiers in the Medawar Centre will also benefit from existing facilities and support services in MCS including:

- Reception service
- On site café / restaurant
- Shower room
- ATM Cash Machine
- Park Newsletter
- Regular bus service
- Bank courier service
- Recycling services

Additional support services in MCS

- Conference room to seat 70
- 6 meeting rooms
- Franking of mail
- Photocopying
- Fax
- Hire of LCD Projector
- Binding facilities
- Secretarial services as required
- Dry Cleaning service

For further information contact:

Shannon Blaszko,
The Magdalen Centre,
The Oxford Science Park
Tel: (01865) 784000
E-mail: Shannon.Blaszko@oxfordsp.com